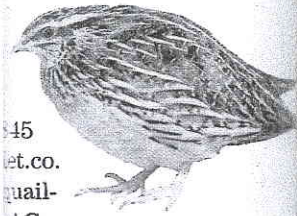


# Poultry

on the feathered trend for urban e newest major litan pet sales rter—the quail. e and mainte- lific egg-layers, rds are thought hose with busy gardens. Quails y quiet and easy rts recommend ales rather than have a tendency sure if left alone ales lay eggs eeks of age, and rs. Poultry-house porting a boom run—a smaller



45  
et.co.  
quail-  
AC

**COUNTRY LIFE**  
perfect  
as gift  
5 123 1231  
ect.com/xmas  
big discounts



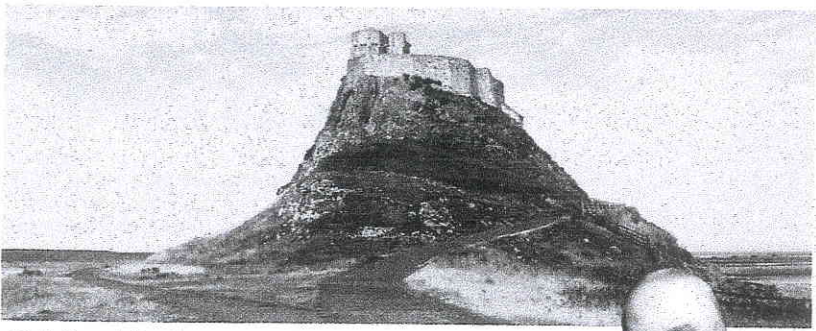
## Half a century of sporting history



A time before Argocats: stalking at Ardverikie, which cost £75.60 a week in 1959

IT was the era of split-cane fishing rods and silk lines, ponies were the sole means of taking a stag off the hill, and a day's driven grouse-shooting cost only £85 per gun. This year, CKD Galbraith, specialist sporting agent with a range of estates across Scotland and Ireland, celebrates its 50th anniversary. To commemorate the event, it has released a special brochure for 2010, which covers the history of the firm and changes in sporting trends since 1959. Among the statistics is the revelation that a week at Inverpattack Lodge, Ardverikie, cost £75.60 per week in 1959, but, today, with 15 stags, it will set you back more than £7,000 for the same period, and that those who wished to try something a little more exotic in the 1950s could try wild-goat stalking—for a mere £54 per day. To order a brochure, telephone 01738 451600 or visit [www.sportinglets.co.uk](http://www.sportinglets.co.uk) SG

## Holiday on Lutyens' Holy Island



ST Oswald's, the cottage designed by Lutyens on Holy Island, off the coast of Northumberland, is now available for holiday lets, through the National Trust. It was built in about 1912, as part of the portfolio of Lindisfarne Castle, originally owned by COUNTRY LIFE's first proprietor, Edward Hudson, for whom Lutyens remodelled the Tudor castle perched on a rocky crag into an Edwardian home. The three-bedroom cottage has unrivalled views and Lutyens features, such as a steep pantiled roof. A week's rent ranges from £373 to £1,275. Visit [www.nationaltrustcottages.co.uk](http://www.nationaltrustcottages.co.uk)

Stay in Edward Hudson's (right) Lutyens-designed home on Holy Island (above)



**Correction** In our article on the COUNTRY LIFE Awards (December 2), it was stated that the Darnley Mausoleum in Cobham, Kent, was handed over to the National Trust this year. In fact, the Trust is still in the process of acquiring the site, with a view to opening it to the public in late spring 2010 ([www.nationaltrust.org.uk/southeast](http://www.nationaltrust.org.uk/southeast)).

Val Corbett/CLPL

[www.countrylife.co.uk](http://www.countrylife.co.uk)

Country life



## Country

The Ch

PH EW—  
tree up

zon. Turkey ven  
Christmas pick

this, the biggest issue  
off to the printers. T

At home, nine-year  
'rediscovered' Father  
unbeliever when she  
looking like me stum  
year, she has reconfi  
to admire her prag

Elsewhere, small p  
pickle and ice as Adv  
boxed and packaged  
cheeses for Christmas  
than ever due to wond  
and *The Telegraph*.

This year, I have de  
to eat more, but bene  
to be so pompous and  
would be the usual Ca  
stockings—Anna rat  
But despite the frenz  
want it any other way  
whether you're ready  
are. Good luck and H

## Town M

A question of

WE can hardly ov  
a new public bu  
built. In fact, it ought to  
The exorbitant cost is  
delegated by Westmin  
dual wards, to spend  
ward opted for the last  
Victorians would we  
was a problem on Nas  
which had columns  
the Tube station, being  
watering holes of Cana  
ish trip. Know no shan  
about public spinnin  
the Continent, yet wh  
new affords to decorat  
where should the chang  
been rejected because  
and electricity cables  
building on the other si  
by anti-terrorist specia  
pavement to erect cras  
hardly welcome the se  
doorstep. I learn the p  
perhaps it had better g  
the more episodic book